

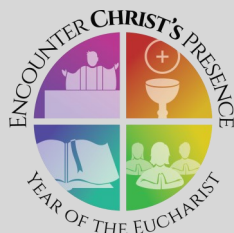


# WEEKLY UPDATE

MONSIGNOR SLADE CATHOLIC SCHOOL  
120 Dorsey Road · Glen Burnie, Maryland 21061 · 410-766-7130

Volume 7, Issue 9

September 24, 2021



#### Next week's calendar:

##### Monday, September 27, 2021:

- No Charlie Brown rehearsal today

##### Tuesday, September 28, 2021:

- Archdiocesan High School Fair, Grades 6-8, 6:00-8:05 p.m., Participants must wear face masks

##### Wednesday, September 29, 2021:

- Brown bags sent home with Grades 3 & 4

##### Friday, October 1, 2021:

- Bag a Breakfast donations from Grades 3 & 4 to Happy Helpers for the Homeless collected by 8:00 a.m. at the carport entrance

## Important News & Notes:

**Happy Helpers for the Homeless:** For those of you who may not know, Monsignor Slade Catholic School has been supporting Happy Helpers for the Homeless since the late 90s. This organization was founded by an 8-year-old girl from Glen Burnie named Amber Coffman, who was volunteering with her mother at a local homeless shelter. She saw the tremendous needs of this vulnerable population and tried to figure out a way to help. She began simply by making lunches in her home to distribute to the homeless people living in the streets. Other people heard her story and volunteered to prepare and donate lunches to support her mission. In fact, our middle school students first began preparing lunches for the homeless as part of a religion project to support Amber in her efforts. Slade has been donating homemade lunches to the organization ever since.



Unfortunately, at this time, Happy Helpers cannot accept homemade lunches; however, we have learned of alternate means of supporting this worthy organization with the "Bag a Breakfast" program. Students and families can prepare a 'breakfast to go' with prepackaged items such as small boxes of cereal or packets of oatmeal, granola bars, juice boxes and more. Monsignor Slade will kick-off this annual service project on Friday, October 1st. We are in need of a few volunteers who would be able to collect items at the carport entrance once a month on Friday mornings, as well as someone who would be available to deliver our donation to the Happy Helpers headquarters in Halethorpe. If you can help, please contact Mrs. Kathie Sullivan at [k.sullivan@mssladeschool.com](mailto:k.sullivan@mssladeschool.com). All hours worked will be applied toward your family's service hours commitment.

Each month, different grade levels will be asked to participate if they are able. For the month of October, 3rd & 4th graders are scheduled to contribute. Two brown bags will be sent home with each of the 3rd & 4th grade students on Wednesday, September 29th, to aid in the preparation of your breakfast donations. To "Bag a Breakfast," you will need one of each of the following:

1. Small box of cereal or packet of oatmeal w/cup & spoon
2. Pop Tart, Nutrigrain Bar or granola bar
3. Applesauce cup, fruit cup, or box of raisins
4. Hot chocolate pack w/cup & spoon
5. Juice box
6. Napkin

Thank you in advance for your support and generosity!

**A Hearty Thank You** to the Landestoy family for providing some tasteful treats and warm coffee to the faculty on a rainy Thursday morning! Your thoughtfulness and generosity was most appreciated!



## Grade Level Reminders:

**Grades 6-8 - High School Fair at Slade:** On Tuesday, September 28th, Monsignor Slade Catholic School will host a high school fair presented by the Archdiocese of Baltimore. All middle school students and their parents are invited to attend this annual event. The hours of the fair are 6:00 - 8:05 p.m., and all participants must wear face masks. The following area high schools will be in attendance: Archbishop Curley, Archbishop Spalding, Calvert Hall, Catholic High, Loyola Blakefield, Mercy, Mt. de Sales Academy, Mount St. Joseph, Notre Dame Prep and St. Mary's.

**Grades 3-5 - A Charlie Brown Christmas:** Please see the attached flyer from Mrs. Abbott, which includes a link to Google Classroom and information about when the cast list will be posted.



## From the School Nurse:



### In response to the AOB COVID Letter to Families from 9/16/2021

- “Exception: In the K–12 indoor classroom setting, the close contact definition excludes students who were within 3 to 6 feet of an infected student (laboratory confirmed or a clinically compatible illness) if both the infected student and the exposed student(s) correctly and consistently wore well-fitting masks the entire time.”
- This means that students, who are properly and consistently masked, will not be required to quarantine IF AND ONLY IF they are more than 3 feet apart.
- **Any student who is less than 3 feet masked, or less than 6 feet unmasked, is considered a close contact and is REQUIRED to quarantine. Close contacts will be given return-to-school instructions by the nurse.**

### **Who is a close contact?**

1. Someone who is less than 3 feet from a positive individual regardless of mask wearing.
2. Someone who is less than 6 feet from a positive individual if one or both are unmasked.

**Students who do not meet the previously mentioned criteria will not be notified that they are a close contact.**

### **COVID-19 Symptoms...**

- **Any ONE of the following:**
  - Sore throat (one of the most common that is being seen in children)
  - Cough
  - Fever of 100.4 or higher
  - Difficulty breathing
  - Diarrhea or vomiting
  - New onset of severe headache (especially with fever)
  - New loss of taste or smell
- PLEASE do not send your child to school if they are exhibiting any symptom from the above list OR if they are beginning to complain of other symptoms.
- We are seeing high numbers of RSV, flu, and strep throat among children this fall, which are all highly contagious.
- **If your child is exhibiting any symptom at all, please notify the school nurse at [j.lydon@mssladeschool.com](mailto:j.lydon@mssladeschool.com) or [covid19@mssladeschool.com](mailto:covid19@mssladeschool.com). The nurse will be able to give you direction to come to school, get tested, or go see a doctor.**



#SladeStrong

## From the School Nurse (continued):

### Masking...

- Please make sure that your child's mask fits properly. There should be no gaps in the mask and it should cover the child's nose and mouth.
- Please keep 1-2 extra masks in your child's backpack in case they lose it, it gets dirty, or breaks.

### Immunization Records...

- **If your child has not turned in an updated immunization record, or if you are new this school year and have not turned in an immunization record, please make every effort to do so this weekend.**
- According to page 24 of the Parent & Student Handbook, "Students who are not up-to-date on the required immunizations will not be allowed to attend school."
- The state of Maryland requires all immunizations to be up-to-date, or have an appointment scheduled to receive missing immunizations, by 20 calendar days from the first day of school. This requirement means that ALL immunizations must be up to date, or have an appointment scheduled, by Monday, September 20, 2021.
- The appointment can be for a date later than 9/20/21, we just need confirmation of an appointment happening within the near future.

### Absences

- **If your child will be absent from school for any reason please email [absences@mssladeschool.com](mailto:absences@mssladeschool.com).** If your child is a close contact of an individual at school, you do not need to notify the absence email.
- The Parent & Student Handbook addresses absences on pages 19-20. Please review this information.

## HASA Happenings:



**Charleston Wrap**  
BETTER PRODUCTS. BETTER FUNDRAISING.

**Gift Wrap Sale:** We are happy to announce the kick-off of our fundraiser with Charleston Wrap on Monday, October 4th. Look for the parent letter and 'sneak peek' catalog to come home with your oldest/only student next week. In the letter, you will find the link to the online catalog, which features over 2,500 gift ideas, as well as information on how to share the catalog with family and friends. The proceeds from this fundraiser will go towards the purchase of the guided reading library for our school!

## Terrapin Times:

We are eagerly awaiting the arrival of our terrapin. Mrs. Urbas and Mrs. Slaton will be picking her up on Wednesday evening. She will be housed in the Discovery Zone on the first floor until April. Students, teachers, and staff will participate in a naming contest for the terrapin shortly after her arrival.



FACT from *National Geographic*: "The diamondback terrapin is an iconic turtle of the coastal salt marshes of the northeastern United States. Found throughout estuaries, shallow bays, and tidal creeks, these reptiles prefer brackish water, but also need periodic access to fresh water to avoid dehydration. Salt glands around their eyes allow them to secrete excess salt from their bloodstream."



### Mission Statement

Rooted in Catholic faith and committed to academic excellence, Monsignor Slade Catholic School is dedicated to forming the whole child to know, love, and be a disciple of Christ.

# RSV Explained

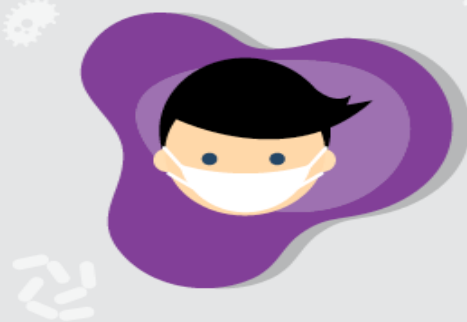
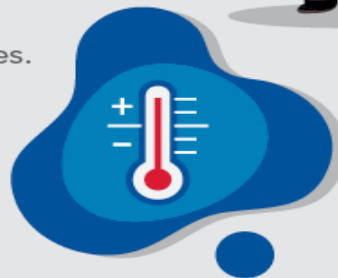


## Respiratory Syncytial Virus (RSV)

A **highly contagious illness** that causes infection of the lungs and breathing passages.

Symptoms include:

- Severe cough
- Wheezing and rapid breathing or difficulty breathing
- Fever



## Droplet Transmission

RSV is **spread through droplets** from coughs and sneezes.

Droplets transferred from:

- Hard surfaces (i.e. doorknobs)
- Clothing
- Skin-to-skin contact

## Treatment

If your child has contracted a respiratory virus, **treatment includes:**

- Nasal suctioning
- Keep child hydrated



## Call Your Child's Doctor...

Contact your provider if your child starts displaying the following:

- Wheezing or seems to be working harder to breathe
- Decreased activity
- Prolonged illness
- Retracting of ribs
- High fever



# Signs and Symptoms of Strep Throat

## Usually include:

- ✓ Sore throat starts quickly
- ✓ Pain when swallowing
- ✓ Fever
- ✓ Red and swollen tonsils, sometimes with white patches or streaks of pus
- ✓ Tiny red spots on the roof of the mouth
- ✓ Swollen lymph nodes in the front of the neck

## Typically do not include:

- ✗ Cough
- ✗ Runny nose
- ✗ Hoarseness
- ✗ Conjunctivitis (pink eye)



Join us for  
**MARDI GRAS,  
 MASKS,  
 MURDER!**



**October 23, 2021, 7:00 pm**

**Monsignor Slade Theater will host a night of glamorous intrigue:**

**A Murder Mystery Dinner Party**

Relax and enjoy family-style Cajun cuisine, sweet tea, and New Orleans jazz at the posh mansion of Marshall Inglewood, Governor of Louisiana. Dinner attire is suggested and we ask that you please wear your most extravagant and decorative Mardi Gras-inspired medical mask. However, something strange is afoot! You'll find yourself immersed in a mysterious event, so please beware as the plot unfolds!

***You are invited to this extraordinary evening, which will benefit the performing arts of Monsignor Slade Catholic School. Join our initiative to update all of our performance technology to allow for 21st-century creativity.***

**Laissez Les Bons Temps Rouler!**

*Tickets are limited and will be sold on a first-come, first-served basis. Please send in the clip-off below to your homeroom teacher. Tickets will be delivered to you prior to the event..*

Cost: \$60 per person (ages 13 years or older); we will seat tables of 8. You can also buy a whole table for \$440.



**Student Name:** \_\_\_\_\_ **Homeroom:** \_\_\_\_\_

**Ticket Holder Name:** \_\_\_\_\_

**Ticket holder phone number:** \_\_\_\_\_

**# of tickets** \_\_\_\_\_ **x \$60 =** \_\_\_\_\_

**Or**

\_\_\_\_\_ **Table x \$440 =** \_\_\_\_\_

**You may pay by check or you can choose to have the total cost added to your family's FACTS account.**

**How will you pay?**

\$ \_\_\_\_\_ **Enclosed check #** \_\_\_\_\_

**OR Please charge \$** \_\_\_\_\_ **to my family's FACTS account.**



**Thank you for supporting performing arts at Slade!**





**Attention “*Charlie Brown Christmas*”  
Cast Members and Families**

**Please join the following Google Classroom  
for all news, announcements and important information  
for cast and crew.**

**<https://classroom.google.com/c/NDazMTY4NzU1OTQy?cjc=sliion5>**

**The cast list will be posted this weekend!**

**THERE WILL BE NO REHEARSAL THIS MONDAY, SEPT. 27TH!**

**REHEARSALS WILL BEGIN  
MONDAY, OCTOBER 4TH.**

**SEE THE GOOGLE CLASSROOM FOR DETAILS.**

**THANK YOU,  
MRS. ABBOTT**