



WEEKLY UPDATE

MONSIGNOR SLADE CATHOLIC SCHOOL
120 Dorsey Road · Glen Burnie, Maryland 21061 · 410-766-7130

Volume 8, Issue 11

October 7, 2022

Next week's calendar:

Monday, October 10, 2022

- HASA Gift Wrap Sale ends
- Charlie Brown rehearsal, 2:45-4:00 p.m., Auditorium

Tuesday, October 11, 2022

- Murder Mystery rehearsal, 2:45-4:00 p.m., Auditorium
- Advancement Committee meeting, 6:30 p.m.

Wednesday, October 12, 2022

- Field Trip, Gr. 6-8, First Fruits Farm
- HASA General Meeting, 6:30 p.m., Auditorium

Thursday, October 13, 2022

- HALF-DAY, Dismissal 12:15 p.m.
- Parent Conferences, P.M.

Friday, October 14, 2022

- SCHOOL CLOSED for students - Parent Conferences

Saturday, October 15, 2022:

- Parent Cleaning Day, 7:30am-12pm, (see flyer attached)
- Murder Mystery final set-up, 10:00 a.m., Auditorium
- Murder Mystery Dinner Theater, *Murder at the Malt Shop*, 6-8 p.m., Auditorium (Students arrive at 5:30 p.m.)



Super Slades
Week of 10/10/22-10/14/22

Top Row: Sofia Cedeno, Declan Millford, Sydney Friend, Luke Outten, Ethan Pierre

Bottom Row: Joshua Fenwick, Khloe Babst, Mattisyn Dzambo, Leslie Maikranz

Important News & Notes:

HASA General Meeting guest speaker: Please Join us on **Wednesday, October 12th at 6:30 p.m.** for the Home and School Association (HASA) General Meeting. Our guest speaker for the meeting will be Jennifer Brady of Brady Mental Health & Wellness. She will speak to parents on ways to identify stress in your children, ways to cope, and how you can help. Jennifer is an Anne Arundel County native whose children attend Slade. She earned her Bachelor of Arts degree in Psychology from University of Maryland Baltimore County and obtained her Master's Degree in Community Mental Health from McDaniel College. We hope that you will be able to join us for this informative meeting. **Please note:** Any student whose parent attends the general meeting will qualify for an out-of-uniform day on Thursday, October 13th.

The Murder Mystery Dinner Theater needs your help! Please join us if you would like to earn some service hours while helping to make this fun evening a success! The murder mystery dinner theater directly benefits the performing arts program here at Slade. For more info on volunteering, see the attached flyer.



If you are interested in buying tickets to experience *Murder at the Malt Shop*, see the flyer attached for more details.

Please note the following addition to the calendar for November: November 16, 2022, is a scheduled HALF-DAY with dismissal at 12:15 p.m. This item was inadvertently missing from the calendar in the parent handbook. Please adjust your family calendar accordingly.

Grade Level Reminders:

8th Grade Parents:

1. Please work with your child to fill out the following form: <https://forms.gle/6bEP6hJc48pXyGXf6>. This form will be most helpful to the 8th grade teachers as they write a high school recommendation for your child. Please complete and submit by October 15, 2022. Should you have any questions, please reach out to your child's homeroom teacher.
2. To access the Archdiocesan High School Guide, please click the link: <https://drive.google.com/file/d/1nbCdrCzumk0-BJkBWJH2ggQ36YqYxaLT/view>
3. Registration for the HSPT (which MUST be taken at Slade) can be accessed using this link: <https://stsusers.com/stsusers/registration/static/baltimore.php>

8th Grade Girls - Info from Mt. de Sales Academy: Sailor Visits - We look forward to hosting Monsignor Slade's eighth grade girls for a Sailor Visit this fall!

How to register for a Sailor Visit:

1. [Fill out an inquiry form](#). Once the inquiry has been processed, parents/guardians will receive an email with instructions on how to access the Sailor Portal.
2. Log on to the Sailor Portal, review the admissions checklist and self-schedule a Sailor Visit.







From the School Nurse:

What to do when your child is sick...

- If he/she has a fever, vomiting, or diarrhea, he/she must stay home for 24 hours from the last episode. He/She must be fever-free without fever-reducing medications (Tylenol, Motrin, etc.) before returning to school.
- **All symptoms require a negative COVID-19 test (can be at-home rapid test) or an alternative diagnosis indicated in a doctor's note.**
- Email absences@msladeschool.com or call 410-766-7130 and ask to speak to the nurse.
- It is very helpful and greatly encouraged to test your child for COVID or take him/her to the doctor before sending him/her to school while exhibiting symptoms. In the case where a student is sent to the nurse's office and does not have a fever, vomiting, or diarrhea, but is exhibiting symptoms, the child may be able to return to class if he/she has already received a negative COVID test before school or the parent consents to COVID testing at school. Please see the attached consent form and email it to j.albaugh@msladeschool.com if you would like to have it on file in the health room. All parents/guardians will still be notified before any testing takes place to reconfirm consent.

COVID vs Flu vs. Common Cold vs. RSV: What You Need to Know

VIRUS	LEVEL OF INFECTIVITY	TIME FROM EXPOSURE TO INFECTION	SYMPTOMS	PREVALENCE IN CHILDREN	VACCINE AVAILABILITY
 COMMON COLD Rhinovirus	Less contagious Symptomatic individuals shed the virus during the first 2 to 3 days of infection.	2 to 3 days	Cough Low-grade fever Sneezing Sore throat Stuffy nose	Common Most children experience 2 to 4 colds per year; frequently associated with asthma exacerbations.	None
 SEASONAL INFLUENZA Influenza virus (A and B)	Contagious Viral shedding occurs 24 hours before symptoms appear, peaking around day 3 of illness.	1 to 4 days	Body aches Chills Cough Fatigue Fever Headache Sore throat Stuffy nose	Common Children younger than 2 are at highest risk for more severe disease.	Multiple approved
 COVID-19 Severe acute respiratory syndrome coronavirus 2 (SARS-CoV-2)	More contagious Viral shedding occurs 2 to 3 days before symptoms appear, peaking around day 3 of illness. However, there can be viral shedding without ever developing symptoms.	2 to 14 days	Body aches Chills Cough Diarrhea Fatigue Fever Headache Loss of smell/taste Nausea/vomiting Shortness of breath Stuffy/runny nose	Becoming more common, and asymptomatic children are possible Typically children have mild symptoms, and rarely they develop multisystem inflammatory syndrome in children (MIS-C) weeks after a SARS-CoV-2 infection.	Two- and three-dose vaccine approved for ages 6 months–4 years Two-dose vaccine and booster approved for ages 5 and older Multiple vaccines and boosters approved for adults
 RSV Respiratory syncytial virus	Very contagious Symptoms can last 7 to 10 days, but some kids can develop a cough that takes up to six weeks to clear	4 to 6 days	Cough Runny nose Sneezing Fever Wheezing	Common Infants are at high risk for severe disease, including pneumonia or bronchiolitis, an inflammation of the small airways in the lungs.	None

Advancement Announcements:

Interested in sharing your school spirit and earning some service hours? Monsignor Slade will host a Prospective Parent Open House on **November 11, 2022**. If you would like to volunteer at this event by welcoming prospective parents, giving tours, or serving in some other capacity, please email Mrs. Hilmer at c.hilmer@msladeschool.com. All volunteers MUST be Virtus-compliant.

Seeking Slade Alumni! Do you know any Monsignor Slade alumni who graduated during a year ending in three or eight? We would like to feature them in the anniversary year of their graduation. Please share our alumni update link: msladeschool.com/alumni.

Volunteers NEEDED!

- **Photography services:** Seeking a volunteer photographer to take photos during the evening of October 15, 2022, Murder Mystery event. Please contact Mrs. Hilmer to express interest.
- **Treat bag stuffing** for the Downs Park Trick-or-Treat Trail.
Dates: Monday, October 10th, Wednesday, October 12th; Friday, October 14th
If VIRTUS-compliant, volunteers can come in on any of the above dates from 1:30-2:30 p.m. or on Monday or Wednesday morning beginning at 7:45 and wrapping up no later than 10 a.m. Supplies will be provided. The work involved will be cutting an insert, stuffing candy bags, counting the completed treat bags, and packing them up for transport.
- **Volunteers Needed for October 15, 2022, Downs Park Trick-or-Treat Trail:**
Monsignor Slade's Advancement Committee and volunteers will again host a booth at Downs Park 'Trick or Treat Trail.' This year the event takes place on Saturday, October 15, 2022, from 11:00 a.m.-3 p.m. Please complete [this sign-up](#) if you would like to volunteer and share your Slade spirit! All volunteers must be Virtus-compliant. Students are welcome to volunteer with a parent. Feel free to come dressed in Slade spiritwear, uniform, or Halloween costumes.

Order a Slade Tervis cup to share your Slade pride while on the go! Use our [online order form](https://forms.diamondmindinc.com/msladeschool/tervistumbler) (<https://forms.diamondmindinc.com/msladeschool/tervistumbler>) to purchase or send clip-off and payment to Mrs. Hilmer in the Advancement Office.



HASA Happenings:



Charleston Wrap
BETTER PRODUCTS. BETTER FUNDRAISING.

This is the last weekend for our Charleston Wrap fundraiser, and we hope you will take part in the online shopping fun! The sale closes out on Monday, October 10th, so please log-on today!! The proceeds from this fundraiser will go towards new stage lighting and also to help fund the next phase of our Monarch butterfly garden project.

Here's how to help us reach our fundraising goal:

1. Please visit registercw.com to register today! Use our ORGANIZATION ID 20455 to register!
2. Send 10 unique and valid shopping email invites to your friends & family using our invite tool at registration.
3. Shop! With over 2,500 gift ideas, you can check-off your holiday gift-list and support our important cause, too.

PRO TIP: The more email invites you send, the more supporters we'll get! So, break out your email contact list, share on social media, and help spread the word! Will you take a few minutes and register now at registercw.com? Thank you so much for your support!

HASA Happenings (continued):

Trunk-or-Treat Registration Info: Monsignor Slade invites you to join our 2nd annual Trunk-or-Treat. Consider decorating your trunk with not-so-spooky decorations and give out some candies. You can earn service hours if you decorate a trunk. All participants must be VIRTUS-compliant. You can arrive at 6:00 pm to prepare. Committee members will direct you where to park. Please use the sign-up genius below to reserve your spot for this amazing event.



When: Friday, October 28, 2022
Time: 6:30pm-8:00pm
Where: Monsignor Slade parking lot

Link to sign-up for Trunk-or-Treat:

<https://www.signupgenius.com/go/20F0C4AAAAC2EA7FB6-monsignor2>

Need service hours? The MSCS Trunk-or-Treat event needs your help! A few volunteers are needed to help sign-in participants and direct them to their reserved spaces, as well as helping those who are 'trick-or-treaters only' find spaces in the auxiliary parking areas. All volunteers must be VIRTUS-compliant. If you are interested in earning service hours during this event, please contact Mrs. Nicole Fields at nccfields@gmail.com.

Christmas at Slade Basket Raffle: The Home and School Association is in the process of reviving our annual Christmas at Slade event. A big part of the tradition of Christmas at Slade has been our "theme basket" raffle. We are seeking donations and/or volunteers to help with this portion of our family Christmas celebration. If you are interested in helping to shop for/assembling baskets, please reach out to our basket raffle chairperson, Mrs. Kelly Gibala, at kellygibala106@gmail.com. If you are interested in making a donation to the basket raffle, please see the flyer attached for more information.



Sports Section:

Basketball registration will be opening soon. Please check the future weekly updates for the registration opening date.

The Athletic Council needs to fill the following positions for next school year 2023-2024. Voting on all positions will occur in March, so please submit your interest as soon as possible to: SladeACpresident@gmail.com. All positions earn the required 12 service hours per year.

Competitive Basketball Commissioner

Earns all 12 required service hours each year.

The Duties of the Competitive Basketball Commissioner:

- Administer all aspects of the Competitive basketball program to ensure its effective and efficient management while adhering to the Slade Athletic Philosophy and By-laws, Slade Values Code, Archdiocesan policy, County League policy, and school policy.
- Provide for consistency in operation among the individual competitive basketball teams where applicable.
- Meet with county program, schedule teams for games/practices, open registration in Sports Engine site, order uniforms and equipment for program
- Participate in Athletic Council meetings.

Sports Section (continued):

- Cast a vote as an active member of the Council.
- Manage all aspects of the Competitive Basketball program budget, including the submission of annual budgets to the school administration.
- While in season, prepare and submit monthly reports regarding the Competitive Basketball program to the Athletic Council.
- Work with the Intramural/Clinic Basketball Commissioner on shared resources (scheduling of gym time, basketballs etc.)

MedKit Coordinator

Earns all 12 required service hours each year.

The Duties of the MedKit Coordinator:

- Distribution of medical kits to each sports team in season prior to the start of the first practice.
- Collection of medical kits from each sports team at the end of each season.
- Maintain an inventory of all medical kits in the program and a list of standardized contents and their quantities for each kit and the total program. In the event that a sport should require kit contents more specific or specialized than what is standard issue, the MedKit Coordinator shall provide the items for that particular sport during that season.
- Maintain a list of which kits were distributed to which teams.
- Inventory of all returned kits at the end of each sports season.
- Restock of all kit contents back to standard kit quantities.
- Maintain an operating budget for restocking of kit contents and provide a monthly update on the program during the attendance of the Athletic Council meetings.
- Periodic evaluation of the need for additional items that may be sport specific or additions to the standard item list.
- Work with each sport Commissioner to coordinate basic First Aid training for all coaches and assistant coaches on an annual basis prior to the start of each sports season

(If the program manager is not able to provide the training first-hand, then it will require additional resources from personnel capable of providing the specific training).

Treasurer

Earns all 12 required service hours each year.

The Duties of the Treasurer:

- Attend Athletic Council meetings.
- Participate in Athletic Council meetings, including providing relevant information regarding the registration system during the meeting.
- Be responsible for reconciling all monies received through the Slade Sports registration system against statements and any other relevant financial information.
- Coordinate and work with Council Members to ensure the efficient and effective operation of the registration system.
- In coordination with the Council President, handle the Point of Contact (POC) duties for the registration system and ensure all communications are properly routed to the appropriate person(s) for prompt handling and any issues that may arise are properly handled.
- Ensure completeness of and distribute to each Commissioner all information pertinent to any matter regarding the registration system.
- Periodic evaluation of the registration system, in coordination with Council Members, to identify additional requirements for the registration system and present such findings to the Council for review.

Sports Section (continued):

Field Hockey Commissioner

Earns all 12 required service hours each year.

The Duties of the Field Hockey Commissioner:

- Administer all aspects of the field hockey program to ensure its effective and efficient management while adhering to the Slade Athletic Policy Guide, Slade Values Code, Archdiocesan policy and school policy.
- Provide consistent operation among individual field hockey teams where applicable.
- Participate in Athletic Council meetings.
- Cast a vote as an active member of the council.
- Manage all aspects of the Field Hockey program budget, ordering, uniforms, scheduling.
- While in season, prepare and submit monthly reports regarding Field Hockey to Athletic Council.

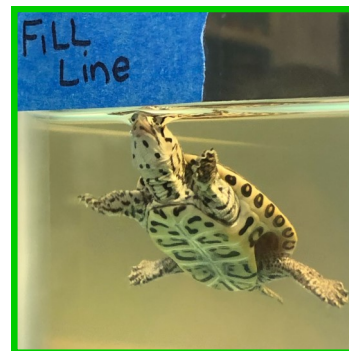
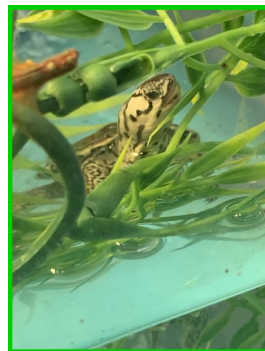
Check out our Slade spirit wear!! All of our sports are available, and we even have Slade Athletics gear for those with multi-sport athletes.

Get your Slade Athletics gear here:

https://rebelsportsgroup.com/slade_athletics/shop/home

Terrapin Times:

Meet Chessie! She is our new diamondback terrapin, and we will be raising her this year as part of the National Aquarium's *Terrapins in the Classroom* program. This program assigns terrapins to 40 schools across the state of Maryland in an effort to provide a head start so that when they are released back into the wild, they will be larger, stronger, and have a much better chance of survival. Right now, Chessie weighs only 13 grams, which is about half the weight of two quarters.



Last year when we released Poppy, even though she was only 10-months old, she was the size of a six year-old terrapin. Poppy was recaptured by scientists on June 28th as part of a field data collection. They reported that she had gained weight and was very healthy! We hope that Chessie will grow to be as strong.

Classes can begin visiting Chessie on October 17th. We will keep you updated over the next few months about her progress and about how teachers are integrating information about Chessie into their curricula.



Mission Statement

Rooted in Catholic faith and committed to academic excellence, Monsignor Slade Catholic School is dedicated to forming the whole child to know, love, and be a disciple of Christ.

COVID-19 TESTING CONSENT FORM FOR STUDENTS

Monsignor Slade Catholic School			
Parent/Guardian Information (Complete if Student is a minor)			
Parent/Guardian Print Name:			
Parent/Guardian Tel./Mobile #:		Email address:	
Preferred method of contact:			
Student Information			
Student Print Name:			
Student SS # (last 4 digits only)			
Student Address:			
City:		County:	
Zip Code:		Date of Birth:	

Monsignor Slade Catholic School, is seeking your consent to test your child for SARS-CoV-2, the virus that causes the novel coronavirus COVID-19. The School is partnering with the Maryland Department of Health (MDH) for a Program to provide onsite testing of students, teachers, staff, and volunteers at the School. This COVID-19 testing program is voluntary and meant to provide a convenient and prompt means to have your child tested for COVID-19 should your child meet the following **Testing Criteria**:

- (1) Exhibits one or more symptoms of COVID-19,
- (2) Comes in close contact with a student, teacher, staff member, or volunteer with COVID-19 or exhibiting symptoms of COVID-19, OR
- (3) Is selected as part of periodic or widespread surveillance testing on the School campus.

This Program is entirely voluntary and your child's education will in no way be affected by your decision of whether or not to participate in this program. You are not required to consent to testing or the release of information, but if you do not consent, the School will be unable to perform COVID-19 testing for your child.

When will testing occur? If you consent, your child will be tested if and when he/she meets the **Testing Criteria** described above. Your child may be tested multiple times if he/she meets the criteria on multiple occasions. Testing is expected to continue for so long as MDH continues to provide testing supplies to the School as part of this Program.

How will the testing be conducted? If you consent, your child will receive free diagnostic testing for the COVID-19 virus from the School nurse. Test specimens will be collected through a process that involves inserting a swab, similar to a Q-tip, into the nose. The specimens will be tested using one type of COVID-19 tests: (1) a Rapid Antigen Test (BinaxNOW COVID-19 Ag Card). This tests is designed to detect if your child currently has SARS-CoV-2, the virus that causes the disease known as COVID-19. The results of this test will not tell you if your child had the virus in the past or has immunity from getting the virus in the future. For more information, please read the attached Patient Fact Sheets on the Abbott BinaxNow test.

When will test results be available? The Rapid Antigen Test does not require a clinical lab analysis and results will be available within approximately 15 minutes after the test is performed. The School will provide a copy of the Rapid Antigen Test results directly to you.

You should seek **emergency care immediately** if your child shows any of the following symptoms: trouble breathing, persistent pain or pressure in chest, new confusion, inability to wake or stay awake, bluish lips or face. This list is not exhaustive; you should call your child's doctor immediately about any other symptoms that are severe or concerning to you.

What should I do when I receive my child's results? If your child's test results are positive, please contact your child's doctor immediately to review the results and discuss what you should do next. You should keep your child at home and keep the School informed. As further outlined in the attached Fact Sheets for Patients, negative results mean that the virus was not detected in your child's specimens. It is possible for the tests to produce incorrect negative results (called a "false negative") in some people who have COVID-19. If your child tests negative but has symptoms of COVID-19 or you have concerns about your child's exposure to COVID-19, you should call your child's doctor.

RELEASE OF INFORMATION

Information to be Released by School: By consenting to COVID-19 testing for your child, you authorize the School to release information and test results on your child to MDH for the purposes of performing COVID-19 public health surveillance purposes. The School may also be required by law to release test results on your child to federal, state, or local government authorities for public health surveillance and contact tracing purposes. Finally, the School may release information on your child's test results to school administrators and other officials within the Archdiocese of Baltimore charged with overseeing its COVID-19 monitoring program.

Information to be Released by MDH: By signing below, you authorize MDH to share your child's COVID-19 test results with the School, the health care provider who ordered the test, and certain federal, state, or local government agencies as required by law.

How long is this consent valid? This consent form is valid through the end of the 2022-2023 school year, unless I provide written notice to the contact person designated below that I wish to revoke my consent.

Can I revoke this consent? You have the right to revoke this consent form at any time by delivering a written notice to the School Principal or designated School Administrator. Your revocation will be effective upon receipt but will not affect any testing or release of information that occurs prior to receipt.

By signing below, I agree that:

- I have read and understand the information in this consent form and related documents and the School has answered any questions I have about the COVID-19 testing offered through this Program.
- I voluntarily agree to COVID-19 testing for my child, and I am legally authorized to make decisions for the child named above.
- I understand that If I am a student age 18 or older, or may otherwise legally consent for my own health care, references to "my child" refer to me and I may sign this form on my own behalf.
- I understand that my child may be tested multiple times during the school year if my child meets the **Testing Criteria** on multiple occasions.
- I acknowledge that a positive test result is an indication that my child must self-isolate and wear a mask, and that I am responsible for contacting my child's doctor to seek medical advice, care, and treatment.
- I understand that my child's test results and related information will be shared as described in the Release of Information Section of this form.

Parent/Guardian Signature (if student under the age of 18): _____

Student Signature (if student age 18 or older): _____

Printed Name: _____ **Date:** _____



“Murder at the Maltshop”

S.O.S.

WE NEED YOUR HELP

This is our 1 and only theater fundraising event at Slade.
It allows us to continue offering high quality performing arts
opportunities for our Slade students.

Please consider supporting this event in one of the following ways:

1. Check out our Amazon Wish List of items that could be donated for the event to cut down on our costs.
https://www.amazon.com/hz/wishlist/ls/1R5QXR5TDPWM2?ref_=wl_s_hare
2. Earn some volunteer hours and let Mrs. Abbott know that you can help set up for the event on Friday, Oct. 14th 4:30-6:30 pm (heavy lifting)
Or Saturday, Oct. 15th 10-4 (decorating)
Email: k.abbott@msladeschool.com
please note that you MUST be VIRTUS compliant to volunteer to help in person
3. Get your tickets for this fun and exciting evening. Dress up in your favorite 50's gear and come out for an amazing night of ice cream sodas, food and entertainment provided by our 8th graders. See the weekly update for your order form.



October 15, 2022, 7:00 pm

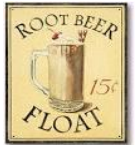
**Monsignor Slade Theater will host a juicy whodunnit served with loads of puns
and topped with a heap of nostalgic 1950's references:**

A Murder Mystery Dinner Party

Relax and enjoy a family friendly night of comfort food, ice cream soda fountain, and all your favorite hits of the 1950's. Help to solve this zany mystery and figure out whodunnit! 1950's style attire is suggested.

***You are invited to this extraordinary evening, which will benefit the performing arts of
Monsignor Slade Catholic School. Join our initiative to update all of our performance
technology to allow for 21st-century creativity.***

Grab your poodle skirts and bobby socks, and let's rock and roll at the MSCS Malt Shop!



*Tickets are limited and will be sold on a first-come, first-served basis. Please send in the clip-off
below to your homeroom teacher. Tickets will be delivered to you prior to the event.*

Cost: \$60 per person (ages 13 years or older); we will seat tables of 8. You can also buy a whole table for \$420.



Student Name: _____ **Homeroom:** _____

Ticket Holder Name: _____

Ticket holder phone number: _____

of tickets _____ **x \$60 =** _____

Or

_____ **Table x \$440 =** _____

**You may pay by check or you can choose to have the total cost added to your family's FACTS account.
How will you pay?**

\$ _____ **Enclosed check #** _____

OR Please charge \$ _____ **to my family's FACTS account.**

**INDOOR/OUTDOOR
PARENT CLEANING DAY
SATURDAY, OCTOBER 15, 2022
7:30—12 Noon**



Please meet at the side entrance of the cafeteria (down the outside stairs). Bring your work gloves and/or cleaning gloves, buckets, rakes, shovels, etc. Slade provides the cleansers, scrub brushes, fall leaves and dirt! Feel free to bring your coffee, water bottle or anything else that will jump start your morning.

Because parents do not need to be
VIRTUS compliant,
**CHILDREN UNDER THE AGE OF 18
ARE NOT ALLOWED!**

Come help us make Slade shine!
THANK YOU!

A cup with school spirit!

Order your Slade Tervis Tumblers now!



Calling all Monsignor Slade families! Show off your Slade Spirit by ordering a Tervis tumbler. It would make a great new student gift if filled with a favorite treat! Take your coffee through the morning drop-off line or keep your beverage cool on the soccer or field hockey sidelines.

Send the below clip-off to the attention of Mrs. Hilmer, Advancement Office with the number of cups you would like to purchase and payment enclosed. Orders will be sent home with oldest/only students.

\$20 per cup

SLADE TERVIS TUMBLER ORDER FORM

Please return to Mrs. Carrie Hilmer, Advancement Office

O/O Child's Name: _____

O/O Homeroom: _____

Number of cups ordered: _____

Total enclosed: _____

Parent
signature: _____

*All checks should be made payable to MSCS.



CHRISTMAS AT SLADE THEMED-BASKET RAFFLE IS BACK!

Our ever-popular event will be returning to Christmas at Slade on Sunday, December 4, 2022

Of course, the huge success of this event is not possible without the help and support of our wonderful Slade families. Here are the ways you can support this fundraiser:

- 1. A Monetary Contribution:** A donation of \$5.00 per family will allow us to purchase items needed to fill our baskets. Students of each family that donates a minimum of \$5.00 will **earn an out-of-uniform day on Thursday, November 17th.**
- 2. A Complete Basket Donation** which would involve you purchasing all the items needed to complete a particular themed basket. You could purchase the items individually or with the help of a group of parents. And of course, you will be recognized as the sponsor for your donated basket! Students of each family that donates a completed basket will **earn an out-of-uniform day on Thursday, November 17th.**

We request all donations, monetary or completed baskets, be sent to the school with the clip-off below **on or before Monday, November 7, 2022.**

Thank you in advance for your consideration. If you have any questions, please reach out to Kelly Gibala at 443-286-6883 or kellygibala106@gmail.com

Christmas at Slade – Basket Raffle
Attn: Kelly Gibala

Donation option (circle one): Monetary Donation Complete Basket

Student(s): _____

Homeroom(s): _____

If donating a basket: Theme of Basket: _____

Name of person(s) donating: _____

Phone: _____ Email: _____