



July 31, 2020

Dear Monsignor Slade Parents,

I hope that this communication finds you and your families well. We are very excited about the return of our families to Slade and know that we have much to do in order to prepare for your safe arrival.

I would like to thank all of the families who were in a position to provide responses to the parent intent form that was sent out earlier this week. The responses that we have received so far have helped us to move forward in some of the many plans that are being made for our safe return to school next month. If you need to access the intent form to either supply your intent or change your intent, here is the link: <https://forms.gle/pW5phT48Sc37yJbv8>. This link will be active through 11:59p.m. on Monday, August 3, 2020.

Next I would like to thank all of those families who either emailed me directly or indicated through the intent form that you had questions and would like someone to reach out. My staff and I spent most of yesterday reaching out to you, but know that we still have families with whom we will be in contact on Monday. We appreciate your many kind words, your concern for our health and safety, and your support of our efforts to comply with all the necessary protocols in order to open the building. Overall, we found that there were many similar questions. So, I would like to take this opportunity to share as much information as I have in the hopes of alleviating some of your concerns.

Pre-K2 and Pre-K3 parents, you will be receiving a separate communication today from Mrs. Gielner concerning the reopening procedures for Edu-Care.

As always, please feel free to reach out to us; we are here for you. The Slade community continues to stand strong, and we will get through this unprecedented time together.

Sincerely,

Alexa L. Cox
Principal

Q1. How will the school be cleaned and sanitized?

A1. The school will be contracting an outside company to apply a disinfectant and protectant that binds to all surfaces and offers a 90-day protection. This product will be reapplied every three months. Please see the attachments to this email which refer to JanPro's Enviroshield for more detailed information on this product. There will also be daily cleaning scheduled throughout the day of restrooms, hallways, and high-touch surfaces. Classrooms will be disinfected each evening. Our convection air system and air conditioning units have undergone their regular maintenance, been cleaned, and had filters replaced.

Q2. What will arrival and dismissal look like for this year?

A2. We will need to implement a staggered arrival and dismissal of students. Families will be assigned a window of dropoff and pickup times. We will also be assigning one of the three main doors to use as entrances/exits for students. Once plans are finalized, we will release that information to you.

Q3. Will specials classes still take place? If so, how?

A3. To start the year, students will have outdoor PE class each week, and students will participate in activities where they are appropriately distanced from one another, which may provide a mask break. Should the weather not cooperate, the teacher will push into the class virtually. Music and art teachers will meet face-to-face with the cohorts to which they are assigned but then push into other classes virtually. Technology and library classes will not be held until further notice; however, teachers will infuse technology concepts and applications into their lessons when possible. All of this is being done to limit the number of adults with whom children are coming into contact.

Q4. Can we wear disposable masks?

A4. No, as we are following CDC guidelines, masks must be cloth.

Q5. What are the mask requirements?

A5. Masks with earloops must be solid in the colors of black, white, red, dark green, or yellow. The decision to have solid masks was made so that they blend with the school uniform and so that patterns, symbols, messages, etc. do not become a source of distraction. We understand that the wearing of masks will be difficult for some of our students, so our PBIS committee is working on ways to motivate the students and make them feel good about being in school with masks. We recommend that children who have not been practicing the wearing of masks for long periods of time start now, so that the adjustment won't occur at the beginning of the school year. Masks should be clearly identified with student names or initials, to avoid confusion or swapping. Students' masks may also be labeled to indicate top/bottom and front/back. Masks should be washed daily.

Q6. What if my child forgets his/her mask?

A6. As students exit their cars in the morning, they should be masked. The school will provide a disposable mask as a stop-gap measure the first time a student forgets a mask. Any time after that, a student will be provided a Slade logo mask at a cost of \$5, which will be added to your FACTS account.

Q7. Will remote learners be provided a Chromebook?

A7. Yes, remote learners will be issued a Chromebook should a family request one. There is an additional agreement that would need to be signed by the families who will be taking one home.

Q8. Will remote learners need to wear a uniform?

A8. Yes, remote learners will need to wear the Slade uniform of the day. This decision was made so that inappropriate “out-of-uniform” clothing, or clothing with symbols, messages, etc. do not become a source of distraction. Additionally, it will help students to remain focused as they work in their dedicated learning spaces at home.

Q9. Will remote learners need to be online all day long with their classmates who are in person?

A9. The Archdiocese is currently working on various schedules so that remote learners are not online all day. Students will not be online during lunch and recess times. As soon as the schedule is finalized, we will share them with you.

Q10. Will remote learners be able to hear teachers clearly with the new cameras and soundbars, especially if the teachers are wearing masks?

A10. Yes, the new soundbars have been tested and were found to provide very clear communication for the remote learner. The cameras have wide-angle lenses. This interactive system will ensure that remote learners and teachers will be seen and heard just as if they were in person.

Q11. Is there a hybrid option for the students instead of just having all in-person or all remote learning?

A11. This will be determined based upon the results of the parent intent form that was sent out. If it is determined that class sizes will be too large resulting in the need to split classes into other rooms within the building and there is not adequate staffing, then a hybrid approach would need to be considered. However, at this time, we anticipate that the space and staffing that we have will allow us to be in-person with families having the option to go remotely.

Q12. How many students will be in a classroom?

A12. This will be determined based upon the results of the parent intent form that was sent out. The number of students in the room will also be determined by square footage and proper spacing in order to accommodate appropriate social distancing guidelines.

Q13. How will middle school science labs take place?

A13. Labs, whether in middle school or elementary, will only take place if there is enough equipment for each individual student’s use. All equipment would need to be sanitized between uses; therefore, in most cases it will not be feasible for students to participate in labs. Teachers will need to perform the experiment as students observe the procedures.

Q14. How often will my student change classes?

A14. Students will remain with their cohorts in the same room each day. For students with multiple teachers, the teachers will move to the students in their cohort room. Students will transit through the hallway and stairwell to go outside for PE and recess. Teachers will be encouraged to take cohorts outside periodically for classes and/or for lunch. Cohorts will be

assigned entrance/exit doors to minimize contact with other cohorts. As long as the students in a cohort are at least 6' apart, this will offer an opportunity for a mask break.

Q15. How will lunch and recess work?

A15. To start the year, students will bring their own peanut-free lunches. Lunches will be eaten in the classroom or outdoors as weather permits. If eaten in the classroom, the procedures will be more restrictive because students will need to remove their masks. Once the procedures have been finalized, we will share them with you. Recess will take place outdoors as weather permits. Students will recess with the students in their cohorts. Designated areas for cohorts will be determined. Students from different cohorts may not interact. If students within a cohort are at least 6' apart, this will offer an opportunity for a mask break.

Q16. What if my child forgets his lunch?

A16. It is important to verify that a child has his/her lunch before he/she exits the car in the morning. As we will not have a lunch service, food will not be available at school. Parents will be notified that a lunch needs to be brought to school. Upon arrival, parents will need to ring the bell at the carport door and a staff member will retrieve the lunch from the parent as we must minimize visitors inside the building.

Q17. Will temperatures be checked upon entry to the school?

A17. According to our Maryland State Department of Education child care license, students in grades Pre-K2-Pre-K4 must have their temperatures checked before they enter the building. Parents will need to take their temperatures in front of the school representative. The school representative will record the temperature in a log. If a student's temperature registers at 100.4 degrees or above, that student will not be permitted to enter the building. The Archdiocese is still in the process of determining the daily screening protocol for schools who have children in grades K-8. As soon as that protocol is finalized, we will send that information to families.

As soon as we have additional information to share, we will send out another communication to you.

Steps to help reduce the spread of Coronavirus

Here is a summary of how JAN-PRO's established and proven processes can help make your facility a cleaner, safer environment.

What is this mysterious new Coronavirus?

A coronavirus is a kind of common virus that causes an infection in your nose or upper throat.

Coronaviruses are *enveloped viruses* with a positive-sense single-stranded RNA genome and with a nucleocapsid of helical symmetry. The size of coronaviruses ranges from approximately 26 to 32 kilobases.

The name 'coronavirus' is derived from the Latin corona, meaning crown or halo.

This morphology is created by the viral spike (S) peplomers, which are proteins that populate the surface of the virus and determine host tropism.

Source: *Madhuri Adnal OneIndia*

How can I protect against enveloped viruses?

Enveloped viruses have a lipid membrane. Many enveloped viruses, such as HBV, HCV, HIV and influenza, are pathogenic to humans and of clinical importance. The lipid envelope of these viruses is relatively sensitive and thus can be destroyed by alcohols such as ethanol or 2-propanol. Enveloped viruses can be killed by disinfectants that are virucidal against enveloped viruses.

Source: *Bode Science Center*

Does EnviroShield destroy enveloped viruses?

JAN-PRO disinfecting processes follow a proven program that uses the broadest spectrum, hospital-strength disinfectants with maximum killing power. Our proprietary EnviroShield system has been proven effective against other, similar enveloped viruses.

Virucidal Efficacy of a Disinfectant for Use on Inanimate Environmental Surfaces

The results [of EnviroShield] indicate complete inactivation of Swine Influenza A (H1N1) virus under these test conditions as required by the EPA for claims of virucidal activity.

ATS Labs

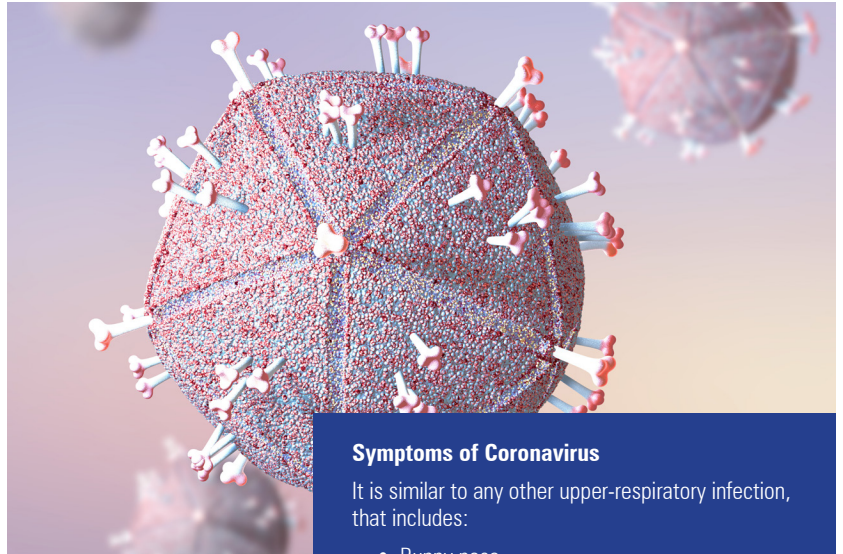
1285 Corporate Center Drive, Suite 110

Eagan, MN 55121

EnviroShield® Commercial Disinfectant System

Bacteria, viruses, and lingering odors have no place in a clean and hygienic workspace. That's why JAN-PRO franchisees use our exclusive EnviroShield® system for commercial disinfection and deodorization. JAN-PRO's EnviroShield® system uses non-toxic commercial disinfectant and proprietary technology to wipe out 99.99% of germs, even in places other systems can't reach. Through the EnviroShield® system, JAN-PRO franchisees can help give your business a healthier, safer, and fresher workplace.

JAN-PRO's EnviroShield® system uses an innovative application system that allows JAN-PRO franchisees to treat spaces that traditional commercial disinfectants typically can't reach. These include hard-to-reach areas, nooks and crannies, porous surfaces, and fibrous materials. Through proprietary misting technology, EnviroShield® envelops treated surfaces in a germ-neutralizing mist. This mist



Symptoms of Coronavirus

It is similar to any other upper-respiratory infection, that includes:

- Runny nose
- Sneezing
- Coughing
- Exacerbated asthma
- Sore throat, and sometimes a fever

In most cases, you won't know whether you have a coronavirus or a common cold.

There is no vaccine for coronavirus.

Best form of prevention:

- Wash your hands thoroughly with soap and warm water or with an alcohol-based hand sanitizer.
- Keep your hands and fingers away from your eyes, nose, and mouth.
- Avoid close contact with infected people.
- Get plenty of rest.
- Take acetaminophen, ibuprofen or naproxen to reduce pain and fever.
- Drink fluids.

penetrates into materials and hard-to-reach areas where other disinfection systems struggle to neutralize germs.

The commercial disinfectant used in the EnviroShield® system offers medical-grade disinfection, eliminating over 99.99% of bacteria and viruses. This includes dangerous bacteria like salmonella and E. coli, common viruses like the cold and flu, and disinfectant-resistant pathogens like MRSA. Even though it's tough on germs, the disinfectant used in the EnviroShield® system is gentle on people and the environment. This disinfectant carries the EPA's highest grade for safety and non-toxicity. It generates no harmful residues, no toxic byproducts, and no harsh or irritating fumes. It's completely safe for use in any workplace, even those where employees or customers experience respiratory difficulties.

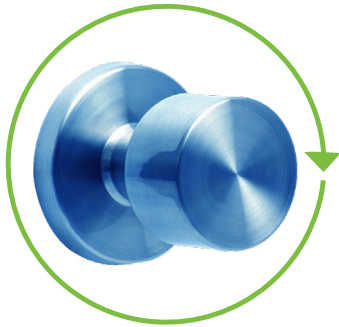
If you would like to learn more about what JAN-PRO franchisees are doing to help reduce the spread of Coronavirus, please visit our website at www.jan-pro.com



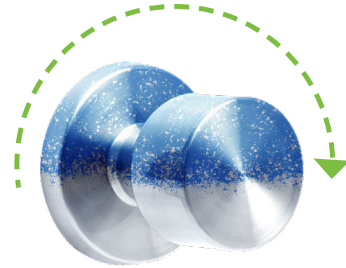
EnviroShield® at Work

EnviroShield® Coverage

The EnviroShield® total disinfecting process surrounds and disinfects all sides of the objects it reaches providing total coverage.



With EnviroShield®



Without EnviroShield®

Only JAN-PRO has the EnviroShield® total disinfecting system that:

- Fully covers all treated surfaces to kill more than 99.9% of harmful bacteria
- Won't cause skin, eye, or respiratory problems
- Is EPA-approved for safety, effectiveness, and eco-friendliness
- Cleans areas other systems can't reach



At JAN-PRO, we mean clean.

For local information please contact:

JAN-PRO

www.JAN-PRO.com

EnviroShield®

The Science of Disinfecting

Protect
your space with
EnviroShield®
total disinfecting
system.



JAN-PRO

Put JAN-PRO's EnviroShield® system to work for you

At JAN-PRO, we've paved the way in commercial cleaning since 1991 – thanks in part to innovative technology like our proprietary EnviroShield® system, which provides total disinfection with an eco-friendly, hospital-grade solution that other systems can't reach.

How It Works

- JAN-PRO's EnviroShield® system uses a disinfectant that is EPA-rated as the safest in its class while being powerful enough to kill 99.9% of harmful bacteria, including MRSA, H1N1, E. coli, and listeria.
- Our equipment features an electrostatic nozzle designed for specific areas and applications.
- Electrostatic technology applies a negative charge to a 30-micron droplet, ensuring 100% surface contact.
- The negative charge causes the disinfectant to cling to and fully cover every surface it touches – thus providing total disinfection.

Where It Works

JAN-PRO's EnviroShield® system is completely effective in areas such as:

- Auto dealerships
- Banks
- Daycares
- Gyms
- Hospitals
- Medical centers
- Offices
- Operating rooms
- Restaurants
- Religious facilities
- Schools



Why It Works

- Our disinfectant is safe enough for everyday use and won't cause skin, eye, or respiratory issues.
- It is environmentally-friendly, and won't leave behind any residue or odor.
- Our unique sprayer allows us to treat areas and surfaces other cleaning systems can't reach.



60% of illnesses that result in absence from work are contracted from equipment in the office.



The level of bacteria on an elevator button is **3x higher** than the amount found on public toilet seats.



Desks are **100x less** hygienic than the average kitchen table yet **60%** eat at their desk.

The typical worker's hands come in contact with **10 million bacteria per day**. JAN-PRO's EnviroShield® system protects you from **99.9%** of them.



32% of people admit to not washing their hands after using the restroom.

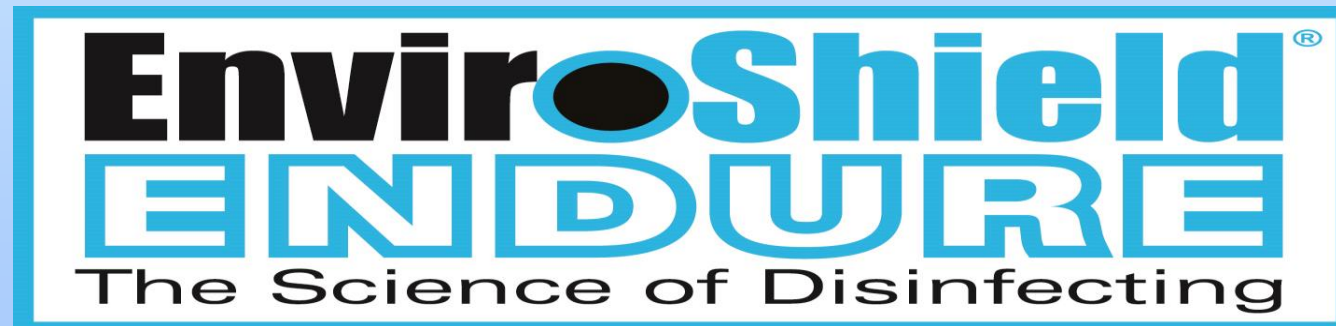


Touching a hand rail is like shaking hands with **10,000 people**.



Nearly **22 million** school days are lost each year due to the common cold.

Welcome & Introductions



EnviroShield™ and EnviroShield Endure™

Complimentary Leading-Edge Technologies

- **EnviroShield™** is the most technologically advanced disinfecting process available. It combines Sniper®, a category IV disinfectant, 100% safe for the environment, and delivery through an electrostatic sprayer, to achieve the “wrap around” effect to provide complete disinfectant coverage.
- **EnviroShield Endure™** is a revolutionary surface treatment whose EPA registered active ingredient is a proprietary silane based antimicrobial. It provides durable surface protection that works continuously to inhibit the growth of surface damaging microbes which can cause sickness, stains, odors or declination of products for up to a year.

EnviroShield™ & Enviroshield Endure™

EnviroShield™

- Hospital Disinfectant
- Short Term Efficacy
- Electrostatically Applied
- Environmentally Friendly
- EPA Approved

EnviroShield Endure™

- Antimicrobial Technology
- Long Term Efficacy- 1 yr
- Electrostatically Applied
- Environmentally Friendly
- EPA Approved

Disinfect & Protect

By Combining these Two Products into an Integrated Delivery Process, We have Created the Most Innovative Solution in the Commercial and Residential Cleaning Industries

What is EnviroShield™

- EnviroShield™ is the most technologically advanced disinfecting process available achieving 100% surface disinfection.
- It combines **SNIPER**®, a category IV, EPA approved disinfectant, 100% safe for the environment.
- Which is delivered through an **electrostatic sprayer** to achieve the “wrap around” effect, or complete disinfection coverage.



Why Sniper® Disinfectant




FEATURES

- Category IV rating MSDS
- EPA registered cleaner and disinfectant
- Chlorine dioxide active ingredient
- Ready to use
- Non corrosive (non SDC) and leaves no residue
- Kills MRSA, e-Coli, VRE, C-Diff, 45 harmful microbes

BENEFITS

- Environmentally safe
- Effective against 99.9% of microorganisms
- Quick, safe microbe kill
- No mixing, no mutating
- Safe for all surfaces even toys and papers on desk
- Quick killing disinfectant without any health effects

Why SNIPER® Disinfectant



EPA Toxicity Categories

MOST TOXIC **LEAST TOXIC**

STUDY	CATEGORY 1	CATEGORY 2	CATEGORY 3	CATEGORY 4
Acute oral	Up to and including 50 mg/kg	>50 through 500 mg/kg	>500 thru 5000 mg/kg	>5000 mg/kg
Acute dermal	Up to and including 200 mg/kg	>200 through 2000 mg/kg	>2000 thru 5000 mg/kg	>5000 mg/kg
Acute inhalation	Up to and including 0.05 mg/liter	>0.05 through 0.50 mg/liter	>0.50 thru 2.00 mg/liter	>2.00 mg/liter
Primary eye irritation	Corrosive (irreversible destruction of ocular tissue) or corneal involvement or irritation persisting for more than 21 days.	Corneal involvement or other eye irritation clearing in 8-21 days.	Corneal involvement or other eye irritation clearing in 7 days or less.	Minimal effects clearing in less than 24 hours.
Primary skin irritation	Corrosive (tissue destruction into the dermis and/or scarring)	Severe irritation at 72 hours (severe erythema or edema)	Moderate irritation at 72 hours (moderate erythema)	Mild or slight irritation at 72 hours (no irritation or slight erythema)
Signal words for labels	DANGER	WARNING	CAUTION	None Required

Why the need for an ESS electrostatic sprayer?

FEATURES

- Produces negative electrical charged
- Reduces chemical usage up to 70%
- 30 micron size droplets
- Creates the “Wrap Around Effect”:
75X the attraction of gravity

BENEFITS

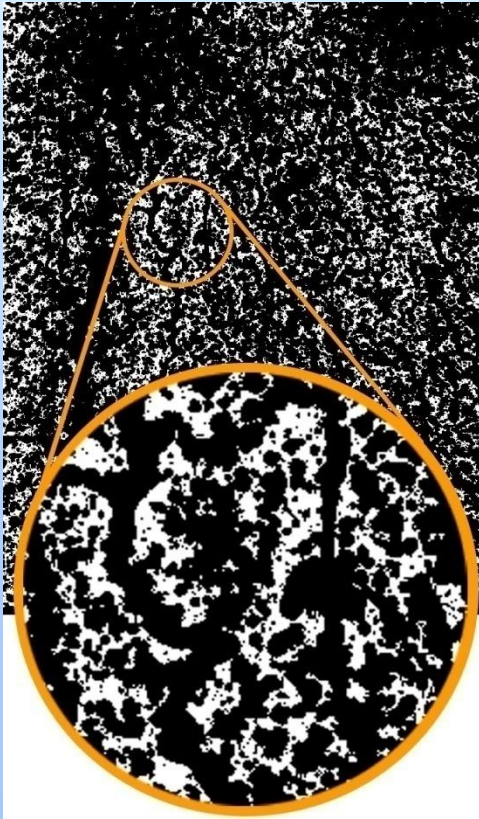
- Complete disinfectant coverage
- Equally spaced droplets disinfecting more with less
- Papers and delicate items can be easily disinfected.
- Coats all sides of surfaces for total disinfection



Comparing EnviroShield to conventional disinfecting

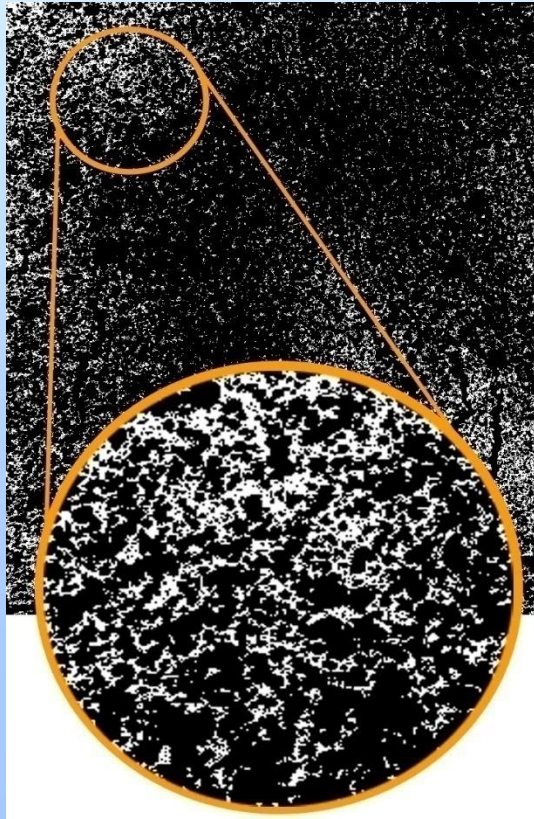
Pump Sprayer 70%

1.68 GRAMS



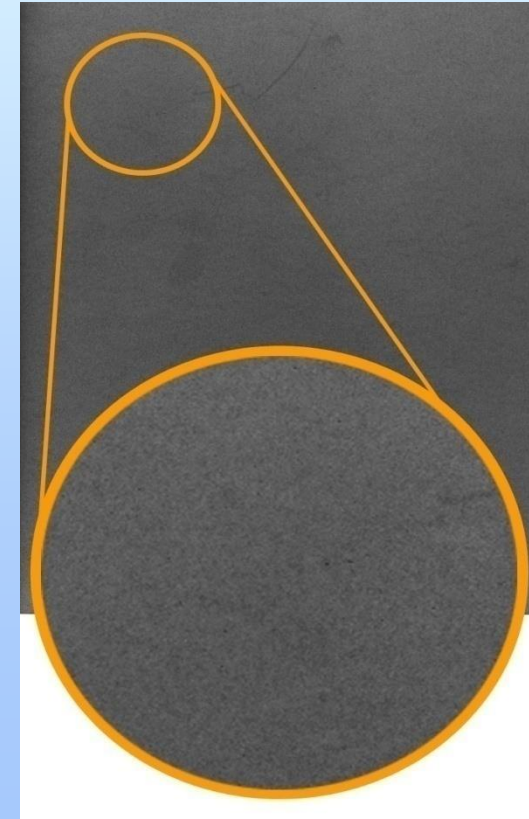
Trigger Sprayer 65%

1.18 GRAMS

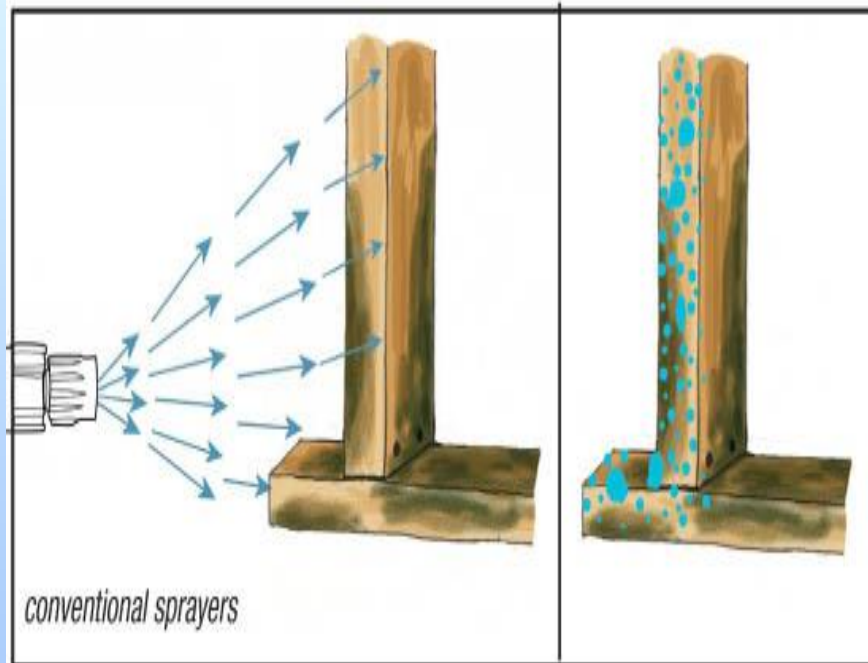


Electrostatic Sprayer 100%

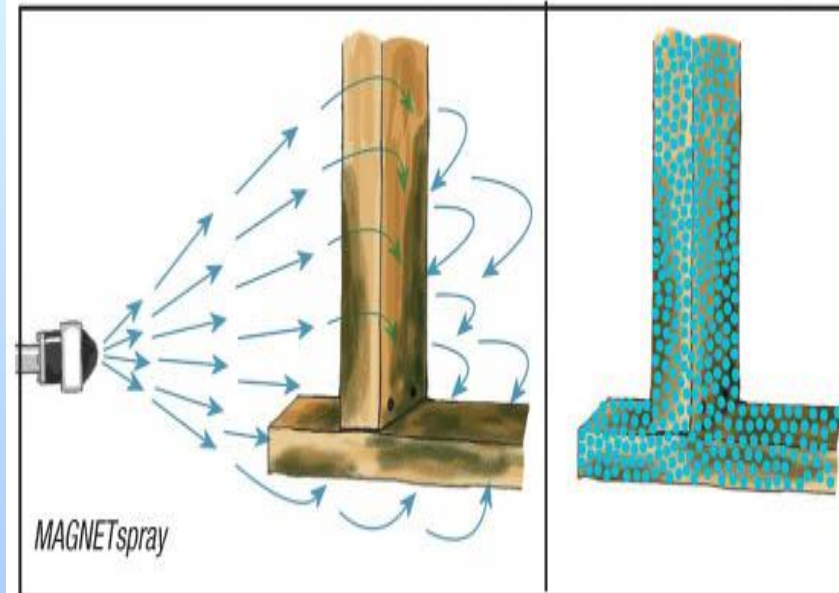
.58 GRAMS



How does EnviroShield™ achieve 100% disinfection coverage?



Conventional spray methods apply straight ahead with no wrap. Spray deposits are blotchy and don't cover hard to reach areas.



Electrically charged spray droplets have a force of attraction of 75 times that of gravity. This means droplets will reverse direction and move upwards, against gravity, to coat hidden areas.